



COMMUNAL-BASED NATURAL RESOURCE MANAGEMENT PROGRAM: *COMMUNITY OF PUERTO PIÑA*

January-February 2011 Newsletter

We are pleased to inform you of our progress regarding the Program in the community of Puerto Piña that was jump started in the middle of 2010. Thanks to several recent donations, along with one very generous gift, the most urgent projects in the community are becoming a reality. With your continued support, this is just the beginning!

In July 2010 we began with the **Waste Management, Cleanup and River Maintenance Project**, as it was a top health priority for the community.



The community and local authorities identified one of their main concerns to be an efficient aqueduct system that would guarantee the community a supply of sufficient potable water, even in the dry season. They also requested help with community recreation and water access. The work was initiated in January 2011 to give the community boats a water access to the village. The dirt removed from the excavations to open the water access was utilized in the construction of the softball field.

Water access and sports field area in 2006



Start-up of work in 2011

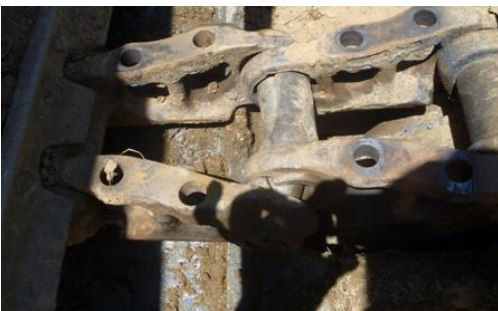


Water access



Softball field

All of the major projects require heavy equipment support. The operation and maintenance of this equipment is one of the most expensive components of the Puerto Piña Program. It can be very frustrating to stop the work due to a broken part that many times is not available in Panama and not to mention the time frame involved to get it to this remote location.



The success of the program is ensured by maintaining permanent communication with the community authorities to share information and assist in solving any problems.



Another activity related with the **Community Aqueduct Project** was a visit to the actual location of the water source in order to complete the design of the aqueduct system.

